

GUARD DOG-PLUS01

Roof Top Tent



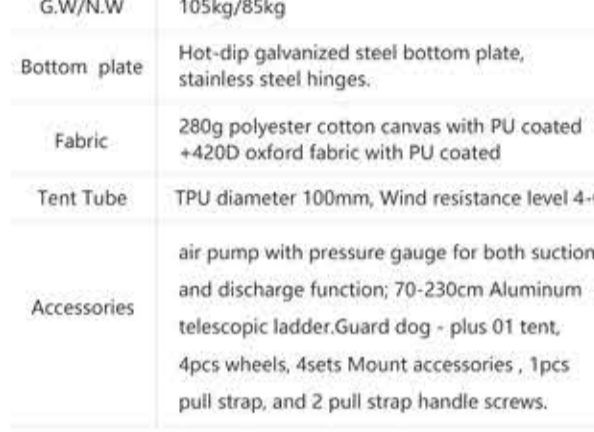
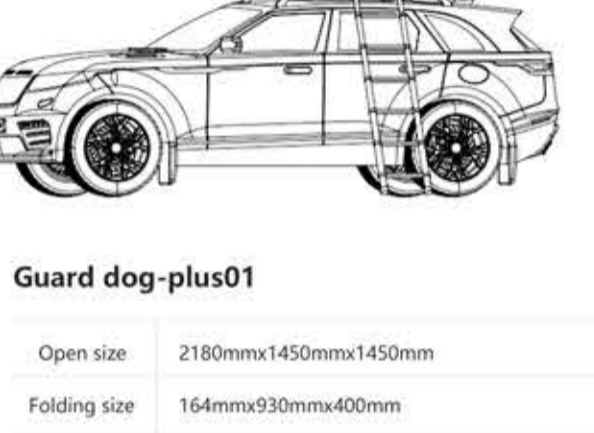
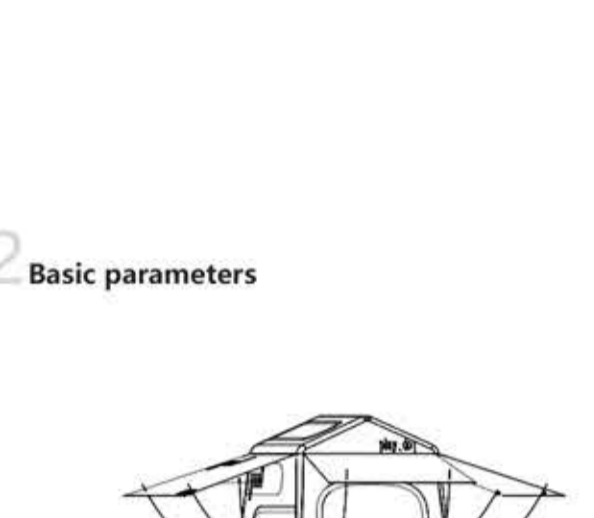
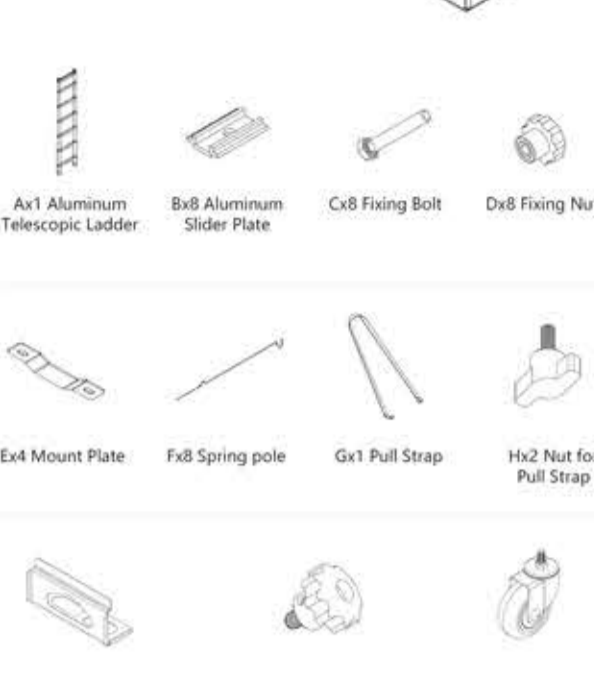
GUARD DOG-PLUS 01 INSTALLATION INSTRUCTIONS

CONTENT

| | |
|--------------------------|---|
| Accessories List | 2 |
| Basic parameters | 3 |
| Installation | 4 |
| Tent opening and closing | 6 |
| Attention | 9 |
| Maintenance Guide | 9 |

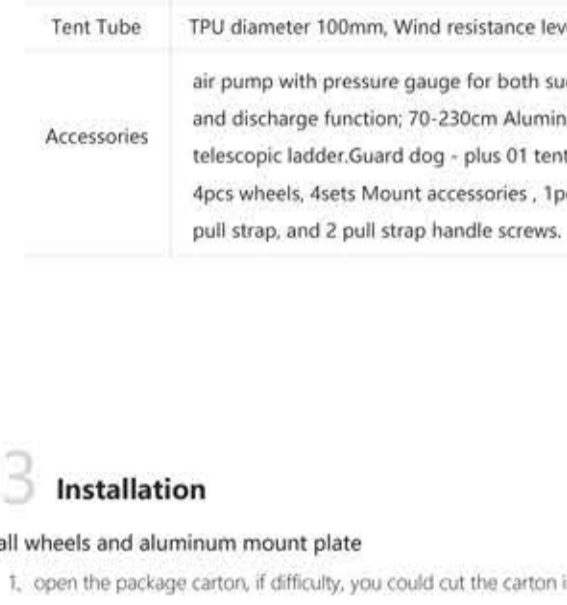
01

01 Accessories List



02

02 Basic parameters



Guard dog-plus01

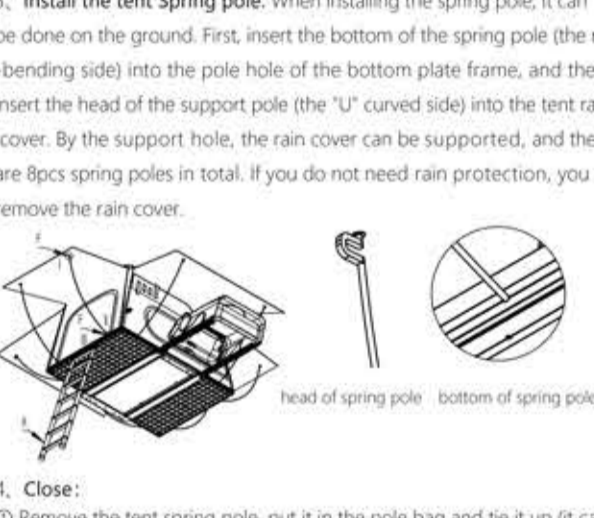
| | |
|--------------|--|
| Open size | 2180mmx1450mmx1450mm |
| Folding size | 164mmx930mmx400mm |
| Package size | 1740mmx1050mmx490mm |
| G.W/N.W | 105kg/85kg |
| Bottom plate | Hot-dip galvanized steel bottom plate, stainless steel hinges. |
| Fabric | 280g polyester cotton canvas with PU coated +420D oxford fabric with PU coated |
| Tent Tube | TPU diameter 100mm, Wind resistance level 4-6 |
| Accessories | air pump with pressure gauge for both suction and discharge function; 70-230cm Aluminum telescopic ladder; Guard dog - plus 01 tent, 4pcs wheels, 4sets Mount accessories , 1pcs pull strap, and 2 pull strap handle screws. |

03

03 Installation

Install wheels and aluminum mount plate

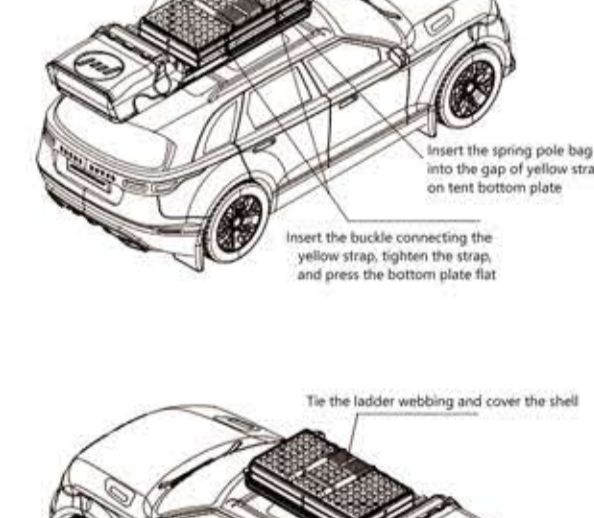
1. open the package carton, if difficulty, you could cut the carton in front and back;
2. Remove the foam that protects the left and right sides of the tent;
3. Lift the whole tent from the dog's head, and after it standing up, install wheels and front pull strap. By these wheels, you could pull the tent by wheels easily. Please kindly note, before lift the tent, you need check whether the nuts of the tent support frame in the back is locked. Also check the lock of the guard dog shell is locked or not. When stand the tent, be careful that the shell is scratched by the nearby sharp objects.



4. install the mount accessories. After installing the wheels and the front pull strap, lay the product flat, remove the rear support frame, open the front lock to lift the head of the dog, and then push the shell to the rear to move out of the space where the aluminum slider plate can be installed. Insert 4pcs aluminum slider plate with bolt into the exposed slide rail grooves on both sides, then close the shell, and put the tent on the vehicle roof in the next step, and use bolts to connect the tent bed base with luggage rack.

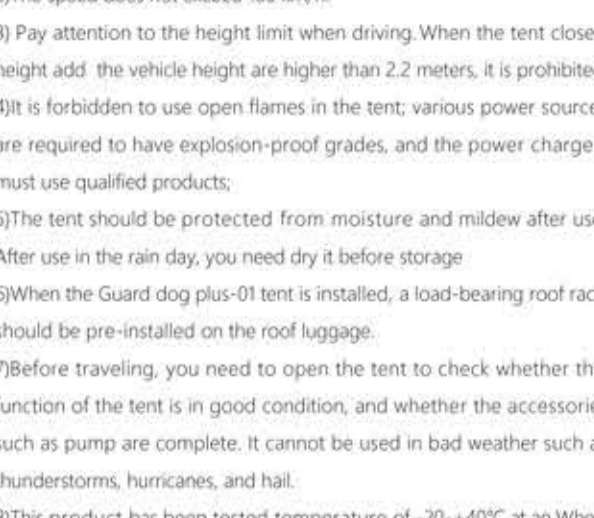
04

Mount accessories install picture



5. Method to install the tent on top of vehicle

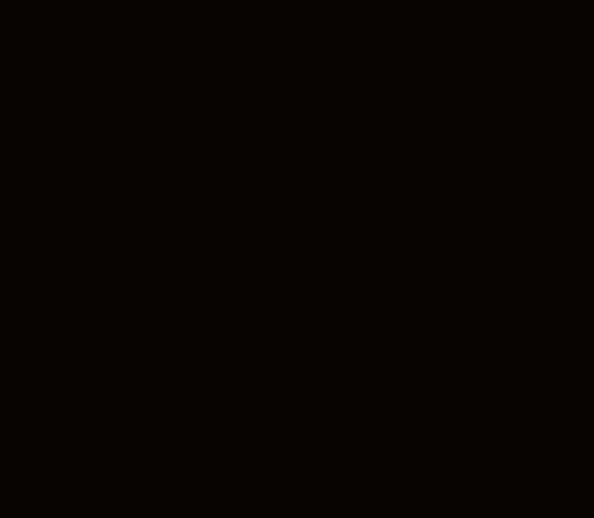
To install the tent on the roof of vehicle, the Fixing bolt with aluminum slider plate should be arranged on both sides of the luggage rack, and the front pull strap should be removed; the four wheels should be removed (if wheels not touch the vehicle roof, not remove is also ok), and the rear tent support frame should also be removed.



There are two ways to install the Guard dog-plus 01 on the vehicle roof: First way is to lift the product on the roof by two persons; the second way is to purchase one multi-function crane which developed for Guard dog-Plus 01. Crane details please refer to the instruction manual of the crane.

05

When the Guard dog-plus 01 is stabilized on the roof, first adjust the position of the front, rear, left and right to ensure that it is placed in the center, and then lock the bottom of the tent with tent luggage rack by mount accessories like below pictures. Please note that the mount accessories need to be tightened to prevent loosening and falling off during driving.



04 Tent Opening And Closing

After the product is installed and locked on the roof, open the lock on the head of the tent, push up to open the head, then turn the head up, push the shell back until the tent inside is fully opened, and put the head of the shell lay down.

Steps to open the tent:

1. Open the buckle on the yellow straps that secures the bed base. Remove the straps of the ladder, pull the telescopic ladder down and pull the ladder outward at the same time, open the first bottom plate and lay it flat, and then go up the ladder to open another bottom plate. Note: When the bottom plate cannot be flattened, check the gap on the bottom plate to prevent the tent or air mattress from getting stuck.



06

2. Find the inflation port in the tent frame tube on the right side of the ladder, and connect the air pump to it for inflation. when inflating, you can see that the tent is slowly propped up, inflate to 6-8psi is ok. After inflating, you can enter the tent along the ladder, and open the inflation port on the self-inflation mattress, after 5mins mattress finished inflated close it.

3. Install the tent Spring pole. When installing the spring pole, it can be done on the ground. First, insert the bottom of the spring pole (the non-bending side) into the pole hole of the bottom plate frame, and then insert the head of the support pole (the "U" curved side) into the tent rain cover. By the support hole, the rain cover can be supported, and there are 8pcs spring poles in total. If you do not need rain protection, you can remove the rain cover.

4. Close:
 - 1) Remove the tent spring pole, put it in the pole bag and tie it up (it can be plug into the gap between yellow strap and the bottom plate).
 - 2) Closed all the windows zippers on the tent. We suggest you leave a small gap, not 100% closed, so air in the tent could go out easily. And close all the zippers on the rain cover at four corners.
 - 3) Open the inflation port to release the air, leave the inflation port open, closed it when you use it next time.

07

4) After release the air in tent and put down it, tidy tent fabric, let all tent body fabric and tent rain cover fabric on the bottom plate. Folding bottom plate which opposite the ladder, and then go down by ladder stand on groundsheet. Folding another bottom plate by ladder. Fixing the ladder by Velcro.

08

05 Attention

- 1) Make sure that the mount accessories are not loose before driving on the highway.
- 2) The speed does not exceed 100 km/h.
- 3) Pay attention to the height limit when driving. When the tent closed height add the vehicle height are higher than 2.2 meters, it is prohibited.
- 4) It is forbidden to use open flames in the tent; various power sources are required to have explosion-proof grades, and the power chargers must use qualified products.
- 5) The tent should be protected from moisture and mildew after use. After use in the rain day, you need dry it before storage.
- 6) When the Guard dog plus-01 tent is installed, a load-bearing roof rack should be pre-installed on the roof luggage.
- 7) Before traveling, you need to open the tent to check whether the function of the tent is in good condition, and whether the accessories such as pump are complete. It cannot be used in bad weather such as thunderstorms, hurricanes, and hail.
- 8) This product has been tested temperature of -20-+40°C at an When you use it exceed this range take care of safety.
- 9) When the tent is used, it is strictly forbidden for all people sit on one side, and it is strictly forbidden to sit outside and extend the body!

06 Maintenance guide

1. Regularly check the locks and accessories.
2. Follow the warning labels of interiors, ladders, and pumps, and take care of them.
3. Regularly check whether there is rust at the rotating hinges and easy-to-wear places, and do a good job of protection;
4. Do not use the tent overload. Some easily contaminated parts should be cleaned up in time to keep the interior of the tent clean and hygienic.

09

